

# ST. THERESA

# PARISH COMMUNITY

## ST. THERESA MISSION STATEMENT

WE ARE A WELCOMING,  
ACTIVE CATHOLIC COMMUNITY  
UNITED BY OUR FAITH, OPEN TO TRANSFORMATION,  
GROWING SPIRITUALLY AND REACHING OUT  
TO LOVE AND TO SERVE OTHERS  
AS JESUS TAUGHT US.

JUNE 26, 2022

THIRTEENTH SUNDAY  
IN  
ORDINARY TIME



*No one who sets a  
hand to the plow and  
looks to what was  
left behind is fit for  
the kingdom of God.*

~ Luke 9:62

Copyright © J. S. Paluch Co., Inc. Photos: pworld/Signature Collection/iStock, mycola/Essentials Collection/iStock  
Excerpts from the *Lectionary for Mass* © 2001, 1998, 1997, 1986, 1970, CCD.

30 MANDALAY ROAD --- OAKLAND, CA 94618 --- 510.547.2777

**CHANGE OF SUNDAY MASS TIME**

The **Sunday Mass time has changed to 9:00 am.** It is live-streamed on our Facebook page for the ill and homebound.

**MASS INTENTIONS - JUNE 25 - JULY 3**

Sat. 5:00 pm Parish Community of St. Theresa  
Sun. 9:00 am † Merlin Barth

Mon. 8:30 am  
Tues. 8:30 am  
Wed. 8:30 am  
Thurs. 8:30 am  
Fri. 8:30 am † Justin Ray Aycock

Sat. 5:00 pm Parish Community of St. Theresa  
Sun. 9:00 am Parish Community of St. Theresa

**KEEP IN TOUCH WITH US**

Via email or text message:



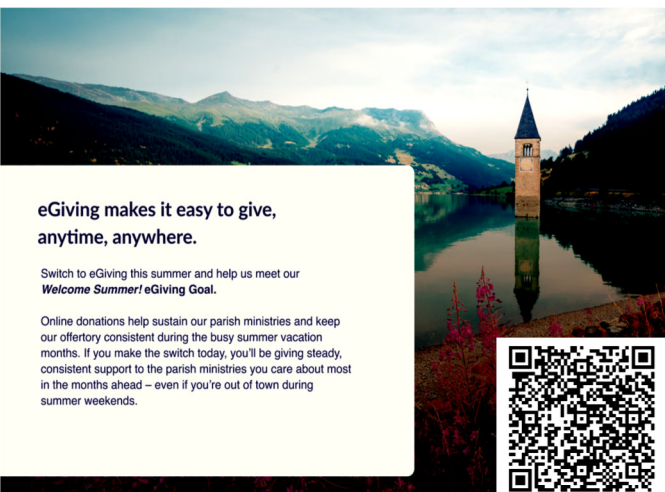
- ♦ Receive the weekly Friday Flocknote
- ♦ Receive parish updates and notices of special events
- ♦ Unsubscribe anytime

Sign-up at  
[flocknote.com/StTheresa30](https://flocknote.com/StTheresa30)  
OR  
Text: STT To: 84579

**SUNDAY OFFERING**

**ONLINE GIVING :**  
(June 13 - 19) 57 DONORS \$ 2,339.20


**MASS/DROP-OFF/MAILED DONATIONS:**  
(June 13 - 19) 35 DONORS \$ 3,318.00



**eGiving makes it easy to give, anytime, anywhere.**

Switch to eGiving this summer and help us meet our **Welcome Summer! eGiving Goal.**

Online donations help sustain our parish ministries and keep our offertory consistent during the busy summer vacation months. If you make the switch today, you'll be giving steady, consistent support to the parish ministries you care about most in the months ahead – even if you're out of town during summer weekends.


**PARISH MAINTENANCE & IMPROVEMENT**

The second collection for the Parish Maintenance & Improvement Fund will be on July 2 & 3.

You may also use Online Giving for this collection.

**PLEASE REMEMBER IN YOUR PRAYERS ALL THOSE WHO ARE ILL ESPECIALLY:**

Matt Mercier, Heidi Parmelee, Aiden Farinella, Dolores Gomez, Alegria Hipolito, Betty Wharton, Hazel Villata, Juanita Estrella, Leslie Fischer, Mike Reilly, Dorothy Donnelly, Olga Lamberti, Tom Sanford, Wendy Parmelee, Roger Baylocq, Ida Scodella, Alicia Gonzalez, Denise Moore, Mirella Baldo, Diana Martínez, Susan Springer, Margie Sullivan, Maddie Heitkemper, Joan Simmons, Badri Nakhjavani, Eddie Bradford, Wendy Jones, Bob Rogers, Orlanda Gonzalez, Kevin Chapman, Diane Cerille, Ruth McCabe, Tom Wilberding, Shirley Roberts, Karen Milliman, Richard Nivens, Anita Perricelli, Danny Ramos, Mark Leonard, Christopher Rodriguez, Maryanne Walsh, Rhonda Santeen, John Whatley, Bishop John Cummins, Fr. Bob McCann, Nancy Coyne, Kevin Stallone, Herman Carmassi, Della Spinelli, Kelly Keith, Jeanne Cuttitta, Susan Buller, Amy Kantowitz, Shelley Faro, Ann Springer, Guy Wallace, Ray Bertolotti, William McCarthy, Cindy Crimmins, Mary Barbieri and all who have the corona virus throughout the world.

**LIVING STEWARDSHIP**

Are other languages spoken in your parish? Try learning phrases so that you can greet and thank parishioners whose mother tongue is not English, or volunteer as a teacher for an English as a Second Language program.

*Copyright © 2009, World Library Publications. All rights reserved.*

**SUPPORT ST. THERESA CHURCH**

By using [smile.amazon.com](https://smile.amazon.com) and choosing St. Theresa Catholic Church, location: Oakland, CA as your charity when you shop, Amazon will donate 0.5% of the price of your eligible AmazonSmile purchases to the parish.

**BULLETIN SUBMISSION DEADLINES**

June 26 bulletin was due by June 17 (Friday)  
July 3 bulletin was due by June 24 (Friday)  
July 10 bulletin is due by July 1 (Friday)  
July 17 bulletin is due by July 8 (Friday)

Items must be received by 4:00 pm on the due date.  
Email to [cathy\\_b@sttheresaokland.org](mailto:cathy_b@sttheresaokland.org).



"Feed my lambs,  
feed my sheep"  
2022 BISHOP'S  
MINISTRIES  
APPEAL

**Bishop's Ministries Appeal 2022**

**St. Theresa Parish Goal - \$35,800**

<https://www.oakdiocese.org/bishops-appeal-donation-page>

Percentage Achieved **46.52%**  
**\$16,654.50** as of May 31, 2022

## FINANCE COUNCIL

I am here on behalf of the Finance Council to update you on the financial state of the parish. We have not provided an update in a while. Before talking about the current state, we feel it is important to acknowledge the challenges we have faced over the last two years of the pandemic and the gratitude we have for all those who have continued to support the parish during the two years of the pandemic.

When the pandemic came to our community in March of 2020, our church, along with others, was shuttered for general attendance. The Parish staff quickly mobilized to start streaming Sunday Mass over the internet. This was an entirely new endeavor which, over time, required investment in new equipment. Members of our community graciously came forward to provide the financial resources to purchase some of the equipment.

Months later when the Parish received clearance to resume in person Mass, we required investment in a multitude of cleaning supplies and disinfectants to provide a safe environment. Again, our community stepped up to provide the support necessary to open our doors to the community.

Whether through online giving, in person giving or dropping off checks at the rectory, you continued contributing. The Parish staff and Finance Council are grateful for your perseverance in supporting the Parish during these challenging times. We are also grateful to those who have made generous end of the year gifts as well as those who have ceded gifts to St. Theresa in their estate dispositions. Through a combination of methods, the Parish has sustained enough incoming funds to continue programs and start new ones.

Against that backdrop, I would like to share with you some of our key financial metrics which provide a sobering view of the financial health of the Parish.

- In 2021, the Parish recorded a loss of \$242,000 compared to a loss of \$98,000 in 2020. Removing non-cash depreciation expense, which is a significant component of total expenses, the loss in 2021 was \$16,000 compared to net income of \$121,000 in 2020.
- The main driver of the loss in 2021 was a reduction in collections income. Unrestricted

plate collections declined from \$563,000 in 2020 to \$435,000 in 2021, a 23% decline.

- Collections over the last four years have averaged \$511,000 per year
- The cash balances of the Parish were approximately \$1.5 million at the end of 2020 and 2021. \$1M of that total is tied up in an endowment fund controlled by the diocese. Our main operating cash account stood at \$51,000 at the end of 2021, a reduction of close to \$75,000 from the end of 2020.
- Expenses are stable and well managed. The main expense components are staff compensation, diocese assessments, and operating requirements such as utilities, insurance, maintenance and supplies. Total expenses in 2020 and 2021 were just over \$900,000 which represented a nearly \$100,000 reduction from 2018 and 2019.

There are a few other finance-related topics to bring to your attention:

- During the first months of the pandemic the Parish was granted a \$75,000 loan through a government-sponsored COVID relief program. The loan was used to pay salaries in 2020. The loan has since been forgiven.
- After many years of litigation, the Diocese settled a lawsuit related to the Event Center. The settlement permitted the parish to cover all liabilities related to the litigation and to make the repairs necessary to get the facility in operation.
- The Parish staff has utilized the Parish Maintenance and Improvement fund to make needed repairs. That fund stood at \$93,000 at the end of 2021. There are several critical capital improvements that have been postponed due to lack of funding. These include replacement of the church roof, replacement of the heating system and the painting of the church building. All three require significant cash outlays.

Regarding the future, the financial health of the Parish is dependent on increasing cash intake. As mentioned, expenses are well managed. Opportunities for reducing expenses significantly are limited and would occur only by impacting the quality of the services and programs of the Parish. It has been the goal of the Finance Council to weather the storms of the last two



**JOIN US THIS SUMMER!**  
**Wednesday Evenings, 7-8:30<sub>pm</sub>**  
**June 15<sup>th</sup> & 29<sup>th</sup> + July 13<sup>th</sup> & 27<sup>th</sup>**  
**Outside on the Upper Lot**

**Attn: all Rising 6th-8th Graders...**



*Casual outdoor hangouts...  
rally your friends  
bring a football, basketball, frisbee  
Snacks, too!*

*Parent will need to sign student in & out.*

**Contact:**

**Keri or Jenny**

*keri@sttheresaoakland.org  
Jenny@sttheresaoakland.org*



**FINANCE COUNCIL** *CONTINUED*

years without impacting the liturgical offerings. If anything, the Parish Staff has enhanced those offerings, particularly through streaming of events and services.

So how can we increase our cash intake? If possible, we ask that you consider increasing your weekly offering. We recognize that everyone’s situation is different so please do what you can. If possible, use online giving. The use of online giving provides a more consistent weekly collection. Finally, please encourage those who may not be participating in our Parish services to come back and give it a try. The financial health of the Parish is closely correlated with Mass attendance.

Jim Cunniffe  
Member, Parish Finance Council

**ONLINE PRAYER REQUEST FOR THE SICK OR RECENTLY DECEASED**

You can submit names for the Prayers of the Faithful for our Weekend Masses and the bulletin prayer list (*Prayers for the Sick or Recently Deceased*) online.

Please complete the form on the parish website page <https://sttheresaokland.org/pray/mass-and-confession-times> their name will be included in the weekly bulletin and Weekend Masses.

*This form is not for Mass Intentions.*

**PASTORAL COUNCIL**

Are you interested in serving your parish on the St. Theresa Pastoral Council? The Pastoral Council is a body of active parishioners that supports the goals and vision of our parish community and staff.

This is a 3 year commitment and we meet monthly.

For more details, please contact Paulette Tuckner at [pmtuckner@comcast.net](mailto:pmtuckner@comcast.net).

**PARISH MINISTRY WEEKLY HIGHLIGHT**

**MEN’S FAITH SHARING**

- Our mission is to provide a monthly opportunity to share faith based on the Sunday liturgy of the word.
- We hope to provide a place where we can grow in our spiritual journey by reflecting on the Word of God to impact our daily lives.

Contact: Jim Frei, [jim@ottofrei.com](mailto:jim@ottofrei.com)

<https://sttheresaokland.org/formation/adult-enrichment/mens-faith-sharing-group>

**LOW GLUTEN HOSTS**

Low Gluten hosts are available at all weekend Masses. They are less than 20 parts per million gluten, under .002%

Please use the presider's communion station to receive a low gluten host.

**MASS INTENTIONS**

To request a Mass Intention contact Melody Marr at [melody@sttheresaokland.org](mailto:melody@sttheresaokland.org) or 510.547.2777, ext. 120

Summer Hours: Tuesday - Thursday  
10:00 am - 2:00 pm

**DO YOU NEED TO REGISTER, HAVE YOU CHANGED YOUR EMAIL ADDRESS, HAVE A NEW TELEPHONE NUMBER, DO YOU RECEIVE OUR FRIDAY FLOCKNOTE NEWSLETTER?**

Let us know so we can update our parish database and keep you current with all upcoming events, news and year-end reports or give you a registration form.

Parish Office (*2<sup>nd</sup> floor of the Parish Center*),  
(Summer Office Hours) Tuesday - Thursday  
10:00 am - 2:00 pm  
or call/email Melody Marr  
510.547.2777, ext. 120  
[melody@sttheresaokland.org](mailto:melody@sttheresaokland.org).

**SOCIAL JUSTICE COMMITTEE (SJC) CORNER**

We invite you to take a look at Catholic Relief Services' Catholic Social Teaching 101 videos.

The videos bring the themes of Catholic social teaching to life and inspire us to put our faith into action. <https://www.crs.org/resource-center/CST-101>. The sixth video is "Rights and Responsibilities". Where do you see or hear about rights being violated in your community or around the world? Whose responsibility is it to ensure those rights are protected or fulfilled? ■ How might God be inviting you to advocate to protect the rights you feel most passionate about, and to ensure that corresponding duties are fulfilled?

Please join the Social Justice Committee as we pray for how we go forward in our works of Charity and Social Justice.

There is much need in our world right now. Take a look at the compassionate work of Catholic Relief Services, World Central Kitchen and Doctor's Without Borders on their websites.

How you can help the Buffalo and Uvalde communities. Go Fund Me does have a Verified Hub to support families. You can also look at the "Buffalo Together Community Response Fund." Uvalde community will likely be setting up similar funding sites.

Remember to take a look at St. Vincent de Paul "Current Needs" section to see the very real needs in our Oakland Community. Remember "love is small, faithful acts."

**Please send us your ideas for Social Justice works at St. Theresa. Our meetings are on the 2nd Wednesday of the month. Currently we are still meeting via Zoom. Next meeting is July 13th at 7pm. Send an email to get zoom link. You can email: Lydia Deck at [ltdeck@me.com](mailto:ltdeck@me.com) for more information too!**

**ST. VINCENT DE PAUL****CURRENT NEEDS**

Volunteers Needed for the Dining Room at the Direct Services Campus in West Oakland: 8:30am to 1pm Tuesday through Saturday. Volunteers to help prepare, and bag warm meals for our guests and serve the meals at the gated entrance to the courtyard. These excellent hot takeaway meals are being provided while the dining room is closed due to COVID. Contact Volunteer Coordinator, Kristen Bernal: Email [kbernal@svdp-alameda.org](mailto:kbernal@svdp-alameda.org) 510-277-6435.

**Men's Clothing** (casual, work, denim, and work pants, and shoes in good condition) and women's hygiene articles can be dropped off in the Church vestibule. These donations are distributed through SVDP Clothes Closet in our Downtown Community Center.

**Nonperishable, non-expired food donations:** Our on-going food collections for the needy people in the Sacred Heart Parish have been graciously acknowledged by those who have been served. This is becoming a regular opportunity for us to feed the hungry, especially during these difficult economic times. We bring the food to Sacred Heart around the third Sunday of the month to accommodate our neighbors some of whom are on various forms of public assistance that leave them short of funds when it come to purchasing food at the end of the month. Food donations may be left in the back of the vestibule in various baskets next to the "Giving Tree at any time.

**Bay Area Rent Relief**

Our Parish Conference of St Vincent de Paul is here to help our neighbors in need, including assisting those who qualify for California's rent relief program to apply for and receive these State funds. If you know of anyone in need requiring assistance, please refer them to our Conference.

Our Parish SVdP Conference meets bimonthly, every third Saturday at 9:30am. The next meeting is July 16. If interested in learning more about our Conference's work, contact Judy Bojorquez at [jtsbojorquez@yahoo.com](mailto:jtsbojorquez@yahoo.com) to be added to email distribution and with any questions you might have.

You may use online giving to make a donation to the St. Theresa St. Vincent de Paul conference. <https://sttheresaokland.org/donate>.

**WEEKLY READINGS***June 27 - July 3***Monday:**

Am 2:6-10, 13-16  
Ps 50  
Mt 8:18-22

**Tuesday:**

Am 3:1-8; 4:11-12  
Ps 5  
Mt 8:23-27

**Wednesday:**

Acts 12:1-11  
Ps 34  
2 Tm 4:6-8, 17-18  
Mt 16:13-19

**Thursday:**

Am 7:10-17  
Ps 19  
Mt 9:1-8

**Friday**

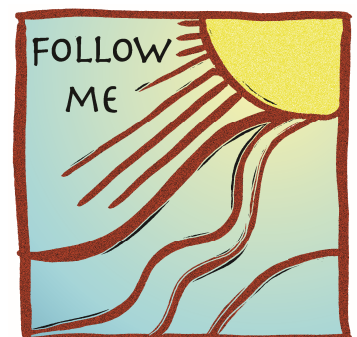
Am 8:4-6, 9-12  
Ps 119  
Mt 9:9-13

**Saturday:**

Am 9:11-15  
Ps 85  
Mt 9:14-17

**Sunday:**

Is 66:10-14c  
Ps 66  
Gal 6:14-18  
Lk 10:1-12, 17-20



# PARISH INFORMATION



## MASS SCHEDULE:

Face Masks are required for all people attending Mass regardless of vaccination status.

**Weekday: 8:30 am (Mon.-Fri.)**

**Saturday Vigil: 5:00 pm**

**Sunday: 9:00 am (New Mass Time)**  
(live-streamed on Facebook)

## RECONCILIATION:

**Saturday: 4:00 pm - 4:30 pm**

Reconciliation is outside, not in the confessional

## PARISH CENTER SUMMER OFFICE HOURS:

**Tuesday - Thursday: 10:00 am - 2:00 pm**

*Please ring doorbell for entrance to parish offices.*

**Phone: 510.547.2777**

**After Hours Medical Emergency Line: 510.610.7715**

**Parish Website: [www.sttheresaoakland.org](http://www.sttheresaoakland.org)**

**Facebook: [StTheresaChurch/Oakland](https://www.facebook.com/StTheresaChurch/Oakland)**

## PARISH STAFF: 510.547.2777

Rev. Robert J. McCann, ext. 121

*Pastor*

[rjmccann@sttheresaoakland.org](mailto:rjmccann@sttheresaoakland.org)

Rev. Abraham Addam, ext. 122

*In Residence*

Rev. Ngema W. Enow, ext. 128

*In Residence*

[ngemawil.enow@gmail.com](mailto:ngemawil.enow@gmail.com)

Cathy Brady, ext. 126

*Liturgy Director*

[cathy\\_b@sttheresaoakland.org](mailto:cathy_b@sttheresaoakland.org)

Jenny Bruni, ext. 123

*High School Youth Ministry Coordinator*

[jenny@sttheresaoakland.org](mailto:jenny@sttheresaoakland.org)

Rob Cakebread, ext. 127

*Music Ministry Director*

[rob@sttheresaoakland.org](mailto:rob@sttheresaoakland.org)

Melody Marr, ext. 120

*Parish Administrator*

[melody@sttheresaoakland.org](mailto:melody@sttheresaoakland.org)

Keri Nims, ext. 124

*Coordinator for Early Childhood Catechesis & RCIC*

[keri@sttheresaoakland.org](mailto:keri@sttheresaoakland.org)

## ST. THERESA SCHOOL

Alicia Ortegon, 510.547.3146

*St. Theresa School Principal*

[a\\_ortegon@sttheresaschool.org](mailto:a_ortegon@sttheresaschool.org)

website: [www.sttheresaschool.org](http://www.sttheresaschool.org)

## Baptisms and Marriages

by appointment (call parish office 510.547.2777)

## To arrange a Funeral

call parish office 510.547.2777, ext. 120

## Family Faith Formation (Grades TK-5) & R.C.I.C.

Keri Nims ~ [keri@sttheresaoakland.org](mailto:keri@sttheresaoakland.org)

## Middle School Youth Ministry (Grades 6-8)

Jenny Bruni and Keri Nims: Co-Coordinator

## High School Youth Ministry/Confirmation

Jenny Bruni ~ [jenny@sttheresaoakland.org](mailto:jenny@sttheresaoakland.org)

## R.C.I.A. Rite of Christian Initiation of Adults

Cathy Brady ~ [cathy\\_b@sttheresaoakland.org](mailto:cathy_b@sttheresaoakland.org)

## Parish Organizations

### Pastoral Council:

Carrie Schaefer

[caralee\\_schaefer@yahoo.com](mailto:caralee_schaefer@yahoo.com)

### Finance Council:

Carolyn Mahoney

[carolyn.mahoney675@gmail.com](mailto:carolyn.mahoney675@gmail.com)

### St. Vincent de Paul Society

Greg Govan

[glgovan@comcast.net](mailto:glgovan@comcast.net)

### CYO (Catholic Youth Organization):

Clarence Robinson

[sttheresaathletics@gmail.com](mailto:sttheresaathletics@gmail.com)

### St. Theresa Men's Club

Chris Bruni

[mensclubsttheresa@gmail.com](mailto:mensclubsttheresa@gmail.com)

### Legion of Mary

Tom Wallace

[tomw1313@sbcglobal.net](mailto:tomw1313@sbcglobal.net)

### WINGS

Ruthanne Allen-Hunt

[ruthanneah@gmail.com](mailto:ruthanneah@gmail.com)

Toinette Eugene

[tmeugene@sbcglobal.net](mailto:tmeugene@sbcglobal.net)

### Social Justice Committee (SJC)

Lydia Deck

[ltdeck@me.com](mailto:ltdeck@me.com)

### Consolation Ministry

Cecile Cuttitta

[cecile.cuttitta@att.net](mailto:cecile.cuttitta@att.net)

### Men's Faith Sharing

Jim Frei

[jim@ottofrei.com](mailto:jim@ottofrei.com)

### Cursillo

Sharon Chipman

[sharonchipman@gmail.com](mailto:sharonchipman@gmail.com)

### Kinderchurch

Shanon Ciston

[s.ciston@gmail.com](mailto:s.ciston@gmail.com)



**HIGHLAND PARTNERS**  
 BOUTIQUE REAL ESTATE INTERNATIONAL PRESENCE  
**Kathy Dittmer**  
 Realtor & Past Childrens Choir Director  
 Resurrection Choir  
**510.334.2001**  
 Better of Homes REAL ESTATE MASON-McDUFFIE BRE 01323768

Possible 10% Commission Donated to St Theresa

**COLLINS ROOFING**  
 Family owned & Operated  
**510-444-2220**  
 Quality Work • Free Estimates  
 Parishioner Lic # 695711

**KRUSE** Plumbing Heating Cooling  
 L.J. KRUSE COMPANY  
 A Century of Service

RESIDENTIAL & COMMERCIAL  
 Proudly Serving The Bay Area for 100 Years

TUNE UP YOUR HEATING SYSTEM BEFORE THE COLD WEATHER SETS IN!

**510.644.0260**

To Schedule Online or Learn More  
**WWW.LJKRUSE.COM**

Mention This Ad and Receive **\$25.00 OFF**

CA LICENSE #405523

**Ann B. Lovi**  
 REALTOR®



Parishioner & Alumna  
**510.332.5747**  
 ann.lovi@compass.com  
**COMPASS**

DRE #R01716499

**ONE PARISH**

Grow in your faith, find a Mass, and connect with your Catholic Community with OneParish!



Download Our Free App or Visit <https://www.oneparish.com>



**corcoran**

GLOBAL LIVING  
 RONNIE MCINERNEY  
 REALTOR & PARISHIONER  
**510.697.7550**

**Visiting Angels**

LIVING ASSISTANCE SERVICES  
**(510) 269-2999**

Andrew Slakey  
 Owner



- Home Care
- Bathing & Dressing
- Meal Preparation
- Take to Medical Appt.
- Respite for Families

[VisitingAngels.com/Alameda](http://VisitingAngels.com/Alameda)

**Village MARKET**

**510-547-3200**

Open: Monday-Saturday 7 am-9 pm & Sunday 8 am-8 pm  
**Outdoor BBQ • 7 Days a week**  
 3 pm-6 pm Year Round  
**5885 Broadway Terrace • www.villagemkt.com**  
 Thank you! Keith & Kari Trimble

**Get this weekly bulletin delivered by email - for FREE!**

Sign up here:  
**www.jspaluch.com/subscribe**

Courtesy of J.S. Paluch Company, Inc.



**Life Matters**

For more information go to [www.usccb.org/respectlife](http://www.usccb.org/respectlife)

**See Your Ad in COLOR**

Call J.S. Paluch Today!  
**1.800.231.0805**

Protecting **Seniors** Nationwide

Medical Alert System



**\$29.95/Mo.** billed quarterly

- One Free Month
- No Long-Term Contract
- Price Guarantee
- Easy Self Installation

Call Today! Toll Free 1.877.801.8608

**If You Live Alone You Need MDMedAlert!**

24 Hour Protection at HOME and AWAY!  
 ✓ Ambulance ✓ Police ✓ Fire  
 ✓ Friends/Family  
 Solutions as Low as **\$19.95** a month  
 FREE Shipping  
 FREE Activation  
 NO Long Term Contracts  
**CALL NOW! 800.809.3352**  
 GPS Tracking w/Fall Detection  
 Nationwide, No Land Line Needed  
 EASY Set-up, NO Contract  
 24/7 365 Monitoring in the USA  
 This Button SAVES Lives! As Shown GPS, Lowest Price Guaranteed!  
 "I have peace of mind... Mom remains independent."  
**MDMedAlert** Safe-Guarding America's Seniors Nationwide!

Catholic Cruises and Tours and The Apostleship of the Sea of the United States of America  
**Take your FAITH ON A JOURNEY.**  
 Call us today at 860-399-1785 or email eileen@CatholicCruisesandTours.com  
**www.CatholicCruisesandTours.com**

**catholicmatch**  
 California



[CatholicMatch.com/myCA](http://CatholicMatch.com/myCA)

**Grow Your Business, Advertise Here. Support Your Church & Bulletin. Free professional ad design & my help!**



email: [RushT@jspaluch.com](mailto:RushT@jspaluch.com)

[www.jspaluch.com](http://www.jspaluch.com)

**Call Traci Rush**  
**925.239.1401**

**FINDaPARISH.com**

Check It Out Today!

**The Most Complete Online National Directory of Catholic Parishes**