

# ST. THERESA

# PARISH COMMUNITY

## ST. THERESA MISSION STATEMENT

WE ARE A WELCOMING,  
ACTIVE CATHOLIC COMMUNITY  
UNITED BY OUR FAITH, OPEN TO TRANSFORMATION,  
GROWING SPIRITUALLY AND REACHING OUT  
TO LOVE AND TO SERVE OTHERS

NOVEMBER 21, 2021

OUR LORD,  
JESUS CHRIST,  
KING OF THE UNIVERSE

Jesus Christ is the faithful witness,  
the firstborn of the dead and ruler of the kings of the earth.  
To him be glory and power forever and ever. Amen.

~ Revelation 1:5, 6



COPYRIGHT © J.S. PALUCH CO., INC. PHOTOS: RENÁTA SEDMÁKOVÁ - STOCK.ADOBE.COM  
EXCERPTS FROM THE LECTIONARY FOR MASS © 2001, 1998, 1997, 1986, 1970, C.C.D.

30 MANDALAY ROAD - OAKLAND, CA 94618 - 510.547.2777

**MASS INTENTIONS - NOVEMBER 20 - 28**

Sat. 5:00 pm The Parish Community of St. Theresa  
 Sun. 10:00 am † Maria Luisa Valdez

Mon. 8:30 am † Maria Luisa Valdez  
 Tues. 8:30 am † Maria Luisa Valdez  
 Wed. 8:30 am † Maria Luisa Valdez  
 Thurs. 9:00 am The Parish Community of St. Theresa  
 Fri. 8:30 am † Maria Luisa Valdez

Sat. 5:00 pm † Maria Luisa Valdez  
 Sun. 10:00 am The Parish Community of St. Theresa

**KEEP IN TOUCH WITH US****Via email or text message:**

- ◆ Receive parish updates and notices of special events
- ◆ Choose to receive updates from groups you're interested in
- ◆ Unsubscribe anytime



Sign-up at  
[flocknote.com/StTheresa30](https://flocknote.com/StTheresa30)  
 OR  
 Text: STT To: 84579

**SUNDAY OFFERING**

**ONLINE GIVING :**  
 (November 1 - 7) 71 DONORS **\$ 4,829.70**


**MASS/DROP-OFF/MAILED DONATIONS:**  
 (November 1 - 7) 48 DONORS **\$ 4,938.00**

**PARISH MAINTENANCE & IMPROVEMENT:**  
 ONLINE: Oct. 4 - Nov. 7: 41 DONORS **\$ 1,406.20**  
 MASS/DROP-OFF/MAILED: 29 DONORS **\$ 1,403.00**

**ONLINE GIVING :**  
 (November 8 - 14) 62 DONORS **\$ 3,400.20**

**MASS/DROP-OFF/MAILED DONATIONS:**  
 (November 8 - 14) 42 DONORS **\$ 2,574.00**

**SUPPORT ST. THERESA CHURCH**

By using [smile.amazon.com](https://smile.amazon.com) and  choosing St. Theresa Catholic Church, location: Oakland, CA as your charity when you shop, Amazon will donate 0.5% of the price of your eligible AmazonSmile purchases to the parish.

**CATHOLIC CAMPAIGN FOR HUMAN DEVELOPMENT COLLECTION**

The collection is **November 27 & 28**. Among the groups being supported by CCHD this year in our diocese is **MONUMENT IMPACT**, a Concord-based Latinix-led nonprofit organization that supports low-income immigrants to acquire the skills and relationships needed to speak out against the structural barriers that prevent them from improving their economic status.

By supporting this collection, you are assisting East Bay organizations doing important work to give a hand up to people who need help.

**PLEASE REMEMBER IN YOUR PRAYERS ALL THOSE WHO ARE ILL ESPECIALLY:**

Matt Mercier, Heidi Parmelee, Aiden Farinella, Dolores Gomez, Alegria Hipolito, Betty Wharton, Hazel Villata, Juanita Estrella, Leslie Fischer, Mike Reilly, Dorothy Donnelly, Olga Lamberti, Matt White, Mark Dreier, Tom Sanford, Wendy Parmelee, Roger Baylocq, Ida Scodella, Sigrid Castaldo, Alicia Gonzalez, Denise Moore, Mirella Baldo, Karis Chodzko, Diana Martinez, Susan Springer, Rachel Cecchetti, Takako Smith, Margie Sullivan, Maddie Heitkemper, Lennox Peerson, Joan Simmons, Badri Nakhjavani, Eddie Bradford, Wendy Jones, Bob Rogers, Orlanda Gonzalez, Kevin Chapman, Diane Cerille, Ruth McCabe, Tom Wilberding, Shirley Roberts, Karen Milliman, Richard Nivens, Anita Perricelli, Danny Ramos, Mark Leonard, Christopher Rodriguez, Maryanne Walsh, Johannes & Lilyanti Sugiarto, Rhonda Santeen, Ricardo Sepulveda, Doris Fiumano, John Whatley, Bishop John Cummins, Fr. Bob McCann, Ellen Corbett, Rob Cakebread, Nancy Coyne, Kevin Stallone, baby Vai Mesui, Herman Carmassi, Robert Schaefer and all who have the corona virus throughout the world.

**LIVING STEWARDSHIP**

Stand up for those who have no voice. Join rallies, sign petitions, send letters and e-mails on behalf of anyone being treated unjustly.

*Copyright © 2009, World Library Publications. All rights reserved.*

**BULLETIN SUBMISSION DEADLINES**

November 21 bulletin, was due by November 12 (Friday)  
 November 28 bulletin, was due by November 17 (Wed.)  
 December 5 bulletin, is due by November 26 (Thursday)  
 December 12 bulletin, is due by December 3 (Friday)

Items must be received by 4:00 pm on the due date.  
 Email to [cathy\\_b@sttheresaokland.org](mailto:cathy_b@sttheresaokland.org).

**Bishop's Appeal 2021**

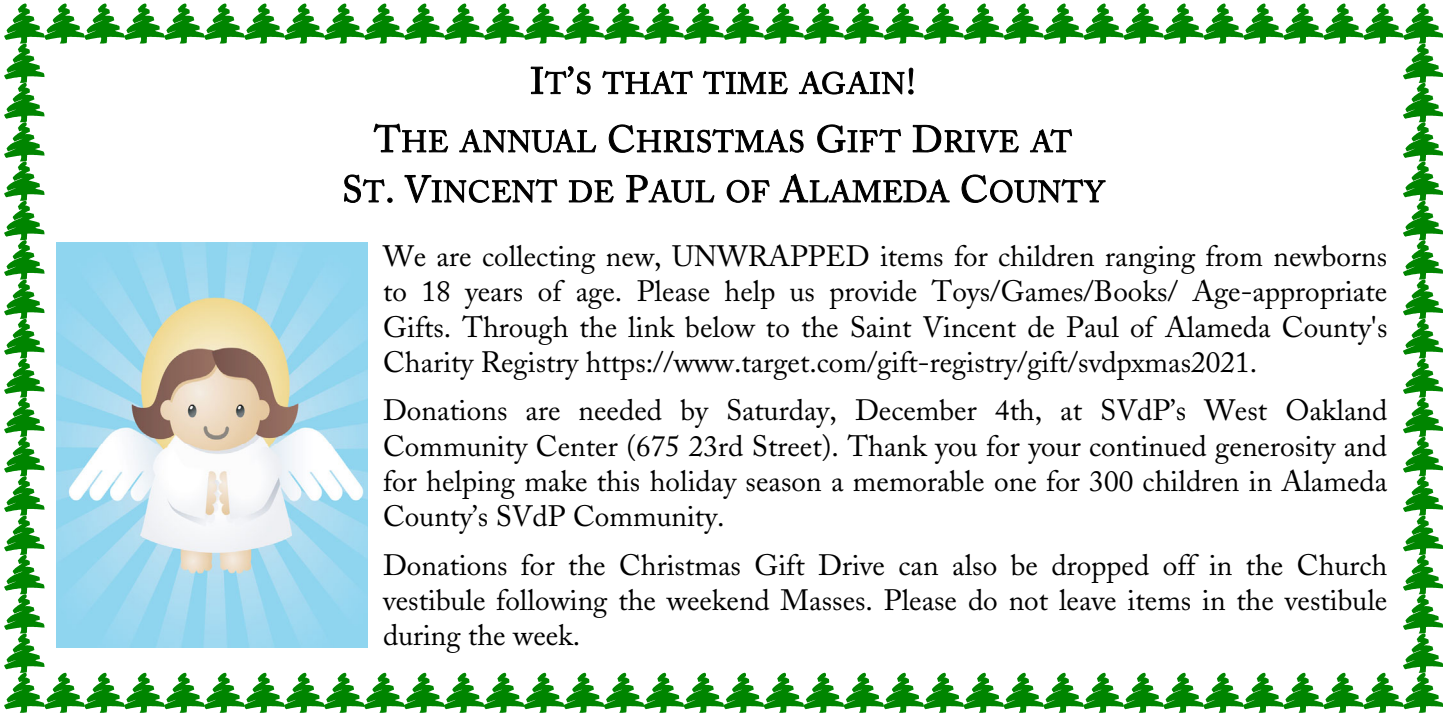
**St. Theresa Parish Goal - \$35,800**

<https://www.oakdiocese.org/bishops-appeal-donation-page>

Percentage Achieved **81.55%**

**\$29,195.00** as of November 15, 2021





**IT'S THAT TIME AGAIN!**  
**THE ANNUAL CHRISTMAS GIFT DRIVE AT**  
**ST. VINCENT DE PAUL OF ALAMEDA COUNTY**



We are collecting new, UNWRAPPED items for children ranging from newborns to 18 years of age. Please help us provide Toys/Games/Books/ Age-appropriate Gifts. Through the link below to the Saint Vincent de Paul of Alameda County's Charity Registry <https://www.target.com/gift-registry/gift/svdpxmas2021>.

Donations are needed by Saturday, December 4th, at SVdP's West Oakland Community Center (675 23rd Street). Thank you for your continued generosity and for helping make this holiday season a memorable one for 300 children in Alameda County's SVdP Community.

Donations for the Christmas Gift Drive can also be dropped off in the Church vestibule following the weekend Masses. Please do not leave items in the vestibule during the week.

**LAST DAY TO TAKE THE SURVEY IS NOVEMBER 22**

St. Theresa parish is participating in a parish survey about discipleship conducted by the Catholic Leadership Institute! We need your help!

Please help us by participating in a 10-15 minute survey online. The survey can be accessed using this link <https://portal.catholicleaders.org/d/k46tyk> from **October 14 - November 22** and will ask you to reflect on your own spiritual growth and enable you to provide feedback on our parish's efforts to help you grow. All responses will be confidential and the parish will only receive information about the community as whole. We will share the link with you a bit closer to the launch of the survey.



We are trying to get the highest response rate possible. This information will be invaluable to Fr. Bob and our various ministries as we plan for the future and strive to be the best disciples we can be. We will receive the results this spring/summer at which time we will share what we have learned with the entire parish.

If you prefer a paper copy you may pick up a paper copy of the survey after daily and Sunday Masses beginning October 14<sup>th</sup>. They will be located in the church vestibule. Printable version of the survey will also be available on the parish website to download. To submit the completed paper survey, please drop off using the rectory mail slot. To make special arrangements for getting a paper copy, please contact Melody Marr at 510-547-2777, ext. 120.

Thank you for helping with this important project!

**SACRISTAN - VOLUNTEERS NEEDED**

Sacristans are needed for 5:00 pm Saturday and 10:00 am Sunday Masses.

A sacristan serves the parish community in a valuable role by making physical reparations for the liturgy before the Mass, and in attending to necessary details as the liturgy concludes. They oversee the “behind the scenes” preparation for liturgy, for example: preparing the hosts and wine, setting out the linens and checking the candles. After the liturgy, the Sacristan returns everything to its proper place. Individual instruction and supervision are provided until a person is comfortable with the ministry

Contact Cathy Brady to volunteer or would like more information, [cathy\\_b@sttheresaokland.org](mailto:cathy_b@sttheresaokland.org).



**THE ST. THERESA INSTANT WINE CELLAR BENEFIT IS BACK**

Here's a quick refresher on how this benefit works:

- We collect wine contributions from our generous community (family, faculty and staff, Parish members, and so forth).
- Then, between **November 29th - December 15th - tickets go on sale** on our instant wine cellar website for your chance to win our cellar prize!
- You can share the link to purchase tickets with family and friends so they can participate as well.
- On **December 16th**, we draw our winner who will receive a delivery\* of a lovely collection of wine to their home just in time for the holidays!

**It's time to build our cellar!**

Do you have a spare bottle or two gathering dust that you'd be willing to contribute to our collection? We appreciate all contributions! High end wine is not a requirement ~ we only ask that your donations be valued at \$15+ retail per bottle. We are glad to include a full range from every day drinking selections to some truly "special occasion" bottles.

**Cellar Master Danielle Crawford** (Julia, 7th) will be collecting your donations to build our cellar prize. There are a few ways you can deliver your contributions:

- ~ Drop off at her front door at 5901 Pinewood Rd, just minutes and a few blocks from school (please label bottles with your name).
- ~ Coordinate a hand off at drop off or pick up at school (her cell is 415-596-5230).
- ~ We will be sending notifications for dates when volunteers will be accepting donations at drop off and pickup at school as well.
- ~ We will be accepting cellar contributions as late as the end of the day on December 15th but would very much appreciate receiving your donations before we break for Thanksgiving if possible.

**Cheers St. Theresa!**

Got questions or would like to communicate in more detail about your donation? Contact Sophia Kassab via Konstella or so.campodonico@gmail.com.

*\*Delivery available within the immediate bay area only.*

**WINGS ~ WOMEN IN GOD'S SPIRIT**

**WINGS** is a faith enhancement group for women that encourages spiritual growth through prayer, Scripture study, life sharing and community. We meet on Wednesdays on the Zoom platform from 9:15-11:15am for the rest of this year. Our engaging speakers will uplift you and keep you informed. You'll experience a welcoming community as we support each other in our spiritual growth. Invite a friend! Women from local parishes and other denominations are welcome! If you were a member last year you will automatically receive a Zoom invitation. If you're new to WINGS or wish to sample a meeting, send your email address to Nancy Midlin midlin.nancy@gmail.com. She will send you the link to Zoom.



*"Led by the Spirit"*

**NOVEMBER 24<sup>TH</sup>**

**THANKSGIVING BREAK**

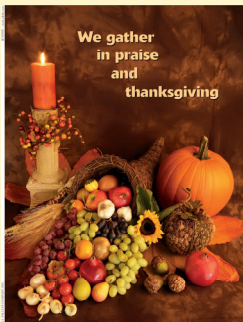
**MASS INTENTIONS**

To request a Mass Intention contact Melody Marr at melody@sttheresaoakland.org or 510.547.2777, ext. 120 (Tuesday - Thursday).

**LOW GLUTEN HOSTS**

Low Gluten hosts are available at all weekend Masses. Please use the presider's communion station to receive a low gluten host.

**Thanksgiving Day Mass**



We gather in praise and thanksgiving

Our Thanksgiving Day Mass will be celebrated at 9:00 am on Thursday, November 25<sup>th</sup>.

We invite you to bring the bread and wine for your Thanksgiving Meal for a special blessing.



Unlike other years we ask that you keep your bread and wine in the pew with you. For the blessing you will be asked to hold them up.



**HOLIDAY EVERGREENS**

**Distribution/Pick Up:**  
**Saturday, December 4th & Sunday, December 5th**

For more information, please contact:  
Jenny Bruni, HSYM Coordinator  
jenny@sttheresaoakland.org (510) 547-2777 x123



**SOCIAL JUSTICE COMMITTEE (SJC) CORNER**

*"The greatest challenge of the day is: how to bring about a revolution of the heart, a revolution that has to start with each one of us." — Dorothy Day*

Dorothy Day was born November 8, 1897 and died November 29, 1980. The cause for her sainthood is advancing.

Dorothy Day's Catholic Worker movement serves the poor in more than 200 communities. Dorothy Day had a hunger for God, a striving for goodness and a passion for justice.

As we prepare for the holidays, may our hearts be on fire with a "revolution of the heart." Look for our Catholic Worker Christmas giving project coming up soon.

Join us for our meeting on December 2nd at 7pm for Christmas project planning. Send an email to Lydia Deck at [ltdeck@me.com](mailto:ltdeck@me.com) for the meeting link.

As we prepare for Thanksgiving:

1. Express thanks in your decorations and traditions. Find a special prayer for before your meal.
2. Donate to a favorite charity – St Vincent de Paul (see their bulleting insert) or Catholic Worker or the Alameda County Food Bank.
3. Send a care package to soldiers overseas
4. Donate to a homeless shelter
5. Sponsor a child in an impoverished country or a newly arrived refugee
6. Invite extra guests for holiday dinner or maybe volunteer at a soup kitchen (see St. Vincent de Paul website)

**ST. VINCENT DE PAUL****Bay Area Rent Relief**

While the State of California Eviction Moratorium ended on September 30, the Covid 19 relief program still has funds and continues to operate. The Alameda County moratorium is still in effect and will remain in place until the public health crisis has ended.

Our Parish Conference of St Vincent de Paul is here to help our neighbors in need, including assisting those who qualify for California's rent relief program to apply for and receive these State funds.

If you know of anyone in need requiring assistance, please refer them to our Conference.

**Current Need:**

SVdP Community Center is restocking their Children/ Baby Room and are in desperate in of clothing sizes newborn to 5 years for girls and boys

Donations for the Christmas Gift Drive or children's clothing can also be dropped off in the Church vestibule following the weekend Masses. Please do not leave items in the vestibule during the week.

Our Parish SVdP Conference meets bimonthly, every third Saturday at 9:30am. Our next meeting is November 20. If interested in learning more about our Conference's work, contact Judy Bojorquez at [jtsbojorquez@yahoo.com](mailto:jtsbojorquez@yahoo.com) to be added to email distribution and with any questions you might have.

You may use online giving to make a donation to the St, Theresa St. Vincent de Paul conference. <https://sttheresaokland.org/donate>

**WEEKLY READINGS**

*November 22 - 28*

**Monday:**

Dn 1:1-6, 8-20  
Ps Dn 3:52-56  
Lk 21:1-4

**Tuesday:**

Dn 2:31-45  
Ps Dn 3:57-61  
Lk 21:5-11

**Wednesday:**

Dn 5:1-6, 13-14, 16-17,  
23-28  
Ps Dn 3:62-67  
Lk 21:12-19

**Thursday:**

Sir 50:20-24  
Ps 138  
1 Cor 1:3-9  
Lk 17:11-9

**Friday:**

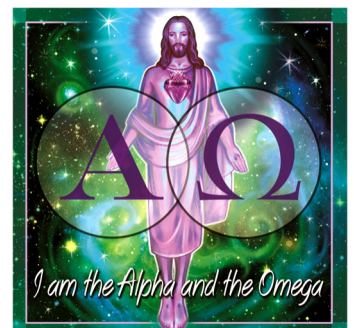
Dn 7:2-14  
Ps Dn 3:75-81  
Lk 21:29-33

**Saturday:**

Dn 7:15-27  
Ps Dn 3:82-87  
Lk 21:34-36

**Sunday:**

Jer 33:14-16  
Ps 25  
1 Thes 3:12-4:2  
Lk 21:25-28, 34-36





# God's Word for Children

**Our Lord Jesus Christ, King of the Universe**

Jesus told Pilate that he came to testify to something. What is it? Jesus said that those who listen to his voice belong to this same thing. You can find the answer in John 18:37.

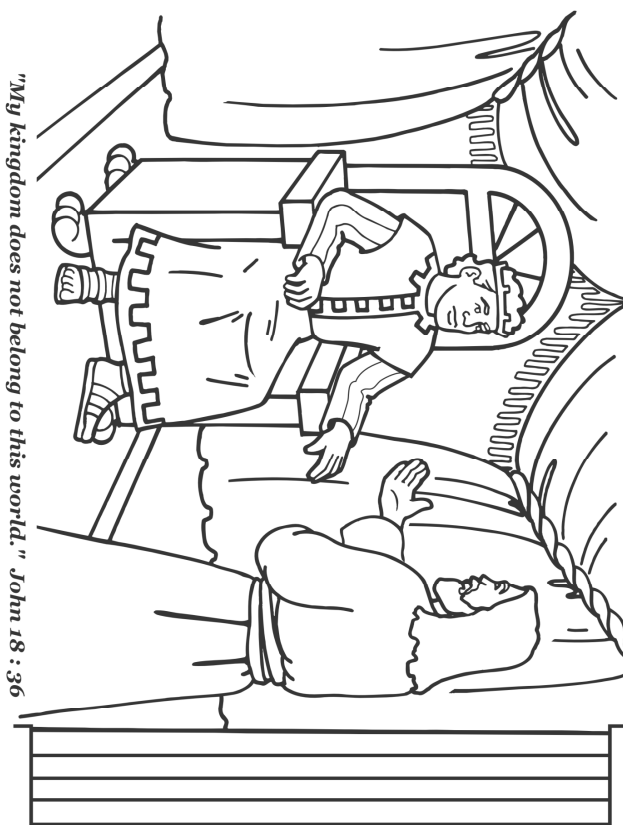
To find it in this puzzle, color purple in every area that has a letter that is found in the banner below.

**JESUS CHRIST THE KING**

The world has had many kings.  
But Jesus is the King of kings.

Look at the number in the jewel on this crown.  
Try to find and circle the word **king** that many times.  
Look up, down, forward, backward, and diagonally.

© I.S. Paluch Co., Inc. • 800-566-6150 • Year B • Our Lord Jesus Christ, King of the Universe  
Scripture excerpts from the New American Bible, revised edition © 2010, 1991, 1986, 1970. Courtesy of Christian Doctrine, Inc., Washington, D.C. and are used by permission of the copyright owner. All rights reserved.  
No part of the New American Bible may be reproduced in any form without permission in writing from the copyright owner.



"My kingdom does not belong to this world." John 18 : 36



## GIVER OF ALL GOOD GIFTS

On this solemnity of Our Lord Jesus Christ, King of the Universe, we celebrate Jesus as ruler of all that is. This loving and generous sovereign is the giver of all good gifts. It is certainly fitting that after honoring Jesus on the last Sunday of the liturgical year we prepare to celebrate the American holiday of Thanksgiving on Thursday. We often take for granted the bounty that surrounds us every day. Thanksgiving is a time to stop and reflect on and give thanks for the gifts we have received. We can also decide how we can show our gratitude, not only in word but also in deed.

Using this sample, make a place card for everyone who will share your Thanksgiving table. Place a card and a pencil near each place setting. When everyone is seated, and before you say grace together, invite everyone to fill in the blanks on the cards. Then, as part of the introduction to grace, go around the table and ask everyone to read what they have written. End by reciting the grace before meals—or, you might want to pray your own family grace. Remember what you have heard and try to live a life of true thanksgiving in the days to come.

Bless us, O Lord, and these your gifts,  
which we are about to receive from your goodness,  
through Christ our Lord.  
Amen.

I am thankful for \_\_\_\_\_

I will show that I am grateful by \_\_\_\_\_

I am thankful for \_\_\_\_\_

I will show that I am grateful by \_\_\_\_\_

# PARISH INFORMATION



## MASS SCHEDULE:

Face Masks are required for all people attending Mass, regardless of vaccination status.

Weekday: 8:30 am (Mon.-Fri.)

Saturday Vigil: 5:00 pm

Sunday: 10:00 am

## RECONCILIATION:

Saturday: 4:00 pm - 4:30 pm

Reconciliation will be done outside

## PARISH CENTER OFFICE HOURS:

Tuesday - Thursday: 10:00 am - 2:00 pm

Please ring doorbell for entrance to parish offices.

Phone: 510.547.2777

After Hours Medical Emergency Line: 510.610.7715

Parish Website: [www.sttheresaoakland.org](http://www.sttheresaoakland.org)

 Facebook: [StTheresaChurch/Oakland](https://www.facebook.com/StTheresaChurch/Oakland)

## PARISH STAFF: 510.547.2777

Rev. Robert J. McCann, ext. 121

*Pastor*

[rjmccann@sttheresaoakland.org](mailto:rjmccann@sttheresaoakland.org)

Rev. Abraham Addam, ext. 122

*In Residence*

Rev. Ngema W. Enow, ext. 128

*In Residence*

Cathy Brady, ext. 126

*Liturgy Director*

[cathy\\_b@sttheresaoakland.org](mailto:cathy_b@sttheresaoakland.org)

Jenny Bruni, ext. 123

*High School Youth Ministry Coordinator*

[jenny@sttheresaoakland.org](mailto:jenny@sttheresaoakland.org)

Rob Cakebread, ext. 127

*Music Ministry Director*

[rob@sttheresaoakland.org](mailto:rob@sttheresaoakland.org)

Melody Marr, ext. 120

*Parish Administrator*

[melody@sttheresaoakland.org](mailto:melody@sttheresaoakland.org)

Keri Nims, ext. 124

*Coordinator for Early Childhood Catechesis & RCIC*

[keri@sttheresaoakland.org](mailto:keri@sttheresaoakland.org)

ST. THERESA SCHOOL

Alicia Ortegon, 510.547.3146

*St. Theresa School Principal*

[a\\_ortegon@sttheresaschool.org](mailto:a_ortegon@sttheresaschool.org)

website: [www.sttheresaschool.org](http://www.sttheresaschool.org)

## Baptisms and Marriages

by appointment (call parish office 510.547.2777)

## To arrange a Funeral

call parish office 510.547.2777, ext. 120

## Family Faith Formation (Grades TK-5) & R.C.I.C.

Keri Nims ~ [keri@sttheresaoakland.org](mailto:keri@sttheresaoakland.org)

## Middle School Youth Ministry (Grades 6-8)

Jenny Bruni and Keri Nims: Co-Coordinators

## High School Youth Ministry/Confirmation

Jenny Bruni ~ [jenny@sttheresaoakland.org](mailto:jenny@sttheresaoakland.org)

## R.C.I.A. Rite of Christian Initiation of Adults

Cathy Brady ~ [cathy\\_b@sttheresaoakland.org](mailto:cathy_b@sttheresaoakland.org)

## Parish Organizations

### Pastoral Council:

Carrie Schaefer [caralee\\_schaefer@yahoo.com](mailto:caralee_schaefer@yahoo.com)

### Finance Council:

Carolyn Mahoney [carolyn.mahoney675@gmail.com](mailto:carolyn.mahoney675@gmail.com)

### St. Vincent de Paul Society

Greg Govan [glgovan@comcast.net](mailto:glgovan@comcast.net)

### CYO (Catholic Youth Organization):

Clarence Robinson [sttheresaathletics@gmail.com](mailto:sttheresaathletics@gmail.com)

### St. Theresa Men's Club

PJ McGahan [pjmcgahan@gmail.com](mailto:pjmcgahan@gmail.com)

### Legion of Mary

Tom Wallace [tomw1313@sbcglobal.net](mailto:tomw1313@sbcglobal.net)

### WINGS

Ruthanne Allen-Hunt [ruthanneah@gmail.com](mailto:ruthanneah@gmail.com)

Toinette Eugene [tmeugene@sbcglobal.net](mailto:tmeugene@sbcglobal.net)

### Social Justice Committee (SJC)

Lydia Deck [ltdeck@me.com](mailto:ltdeck@me.com)

### Consolation Ministry

Cecile Cuttitta [cecile.cuttitta@att.net](mailto:cecile.cuttitta@att.net)

### Men's Faith Sharing

Jim Frei [jim@ottofrei.com](mailto:jim@ottofrei.com)

### Cursillo

Sharon Chipman [sharonchipman@gmail.com](mailto:sharonchipman@gmail.com)

### Kinderchurch

Shanon Ciston [s.ciston@gmail.com](mailto:s.ciston@gmail.com)





**HIGHLAND PARTNERS**  
 BOUTIQUE REAL ESTATE INTERNATIONAL PRESENCE  
**Kathy Dittmer**  
 Realtor & Past Childrens Choir Director  
 Resurrection Choir  
 510.334.2001  
 Better of Homes REAL ESTATE MASON-McDUFFIE BRE 01323768

Possible 10% Commission Donated to St Theresa

**COLLINS ROOFING**  
 Family owned & Operated  
 510-444-2220  
 Quality Work • Free Estimates  
 Parishioner Lic # 695711

**KRUSE** Plumbing Heating Cooling  
 L.J. KRUSE COMPANY  
 A Century of Service

RESIDENTIAL & COMMERCIAL  
 Proudly Serving The Bay Area for 100 Years

TUNE UP YOUR HEATING SYSTEM BEFORE THE COLD WEATHER SETS IN!

510.644.0260

To Schedule Online or Learn More  
 WWW.LJKRUSE.COM

Mention This Ad and Receive \$25.00 OFF

CA LICENSE #405523

**Ann B. Lovi**  
 REALTOR®



Parishioner & Alumna  
 510.332.5747  
 ann.lovi@compass.com  
**COMPASS**

DRE #R01716499

**ONE PARISH**

Grow in your faith, find a Mass, and connect with your Catholic Community with OneParish!



Download Our Free App or Visit  
 https://www.oneparish.com



**corcoran**

GLOBAL LIVING  
 RONNIE MCINERNEY  
 REALTOR & PARISHIONER  
 510.697.7550



LIVING ASSISTANCE SERVICES

(510) 269-2999

Andrew Slakey  
 Owner



- Home Care
- Bathing & Dressing
- Meal Preparation
- Take to Medical Appt.
- Respite for Families

VisitingAngels.com/Alameda

**Village MARKET**

510-547-3200

Open: Monday-Saturday 7 am-9 pm & Sunday 8 am-8 pm  
**Outdoor BBQ • 7 Days a week**  
 3 pm-6 pm Year Round  
 5885 Broadway Terrace • www.villagemkt.com  
 Thank you! Keith & Kari Trimble

Get this weekly bulletin delivered by email - for FREE!

Sign up here:  
 www.jspaluch.com/subscribe

Courtesy of J.S. Paluch Company, Inc.



**Life Matters**

For more information go to [www.usccb.org/respectlife](http://www.usccb.org/respectlife)

See Your Ad in **COLOR**

Call J.S. Paluch Today!  
 1.800.231.0805

**If You Live Alone You Need MDMedAlert!**

24 Hour Protection at HOME and AWAY!  
 ✓ Ambulance ✓ Police ✓ Fire  
 ✓ Friends/Family  
 Solutions as Low as \$19.95 a month  
 FREE Shipping FREE Activation NO Long Term Contracts  
 CALL NOW! 800.809.3352  
 GPS Tracking w/Fall Detection Nationwide, No Land Line Needed EASY Set-up, NO Contract 24/7 365 Monitoring in the USA  
 This Button SAVES Lives! As Shown GPS, Lowest Price Guaranteed!  
 "I have peace of mind... Mom remains independent."  
 MDMedAlert Safe-Guarding America's Seniors Nationwide!

Protecting Seniors Nationwide



Medical Alert System

\$29.95/Mo. billed quarterly

- One Free Month
- No Long-Term Contract
- Price Guarantee
- Easy Self Installation



Call Today! Toll Free 1.877.801.8608

Catholic Cruises and Tours and The Apostleship of the Sea of the United States of America  
 Take your FAITH ON A JOURNEY.  
 Call us today at 860-399-1785 or email eileen@CatholicCruisesandTours.com  
 www.CatholicCruisesandTours.com

**catholicmatch**  
 California



CatholicMatch.com/myCA

Grow Your Business, Advertise Here. Support Your Church & Bulletin. Free professional ad design & my help!



email: RushT@jspaluch.com

www.jspaluch.com

**Call Traci Rush**  
 925.239.1401

**FINDaPARISH.com**

Check It Out Today!

The Most Complete Online National Directory of Catholic Parishes